

by Valerie Easton «

photographed by Benjamin Benschneider

VISION WITH A VIEW



The front door was crafted from teak by Whidbey wood artist Bruce Schwager, and the hinges and rhododendron-leaf door handle forged by local blacksmith Jeff Holtby. The moon window frames a view of Danielle Bodine's studio and a stone temple resting at the base of a fir tree.

WITH ASIAN INSPIRATION AND LOTS OF LOCAL TALENT, AN ISLAND OF SERENITY IS SHAPED

CONVERGENCE OF talent created the Asian-inspired house on Whidbey Island owned by Danielle and Norm Bodine. An artist and retired manufacturing executive, respectively, the Bodines moved to the West from an old French-country-style house in Michigan. They bought their Whidbey property on impulse after spying a "For Sale" sign on a camping trip at nearby Ebey's Landing. A majestic setting for making a Japanese garden enticed Norm; a separate studio for working on her fiber arts swayed Danielle. Both were beguiled by the west-facing view of salt water and mountains, and the chance to enjoy long twilights and sunsets. They recruited Whidbey architect Todd

Continued on page 56 >





Danielle Bodine sits on the terrace outside her studio, just across a covered courtyard from the main house. The studio was built first so the couple could live in it during frequent trips to Whidbey Island for the year-plus of construction.

ilities



Available in 15 colors at the same price

onal
E \$2999

10-6, Sun 11-6
Sat 10-8, Sun 11-6
Mon-Sat 10-8, Sun 11-6

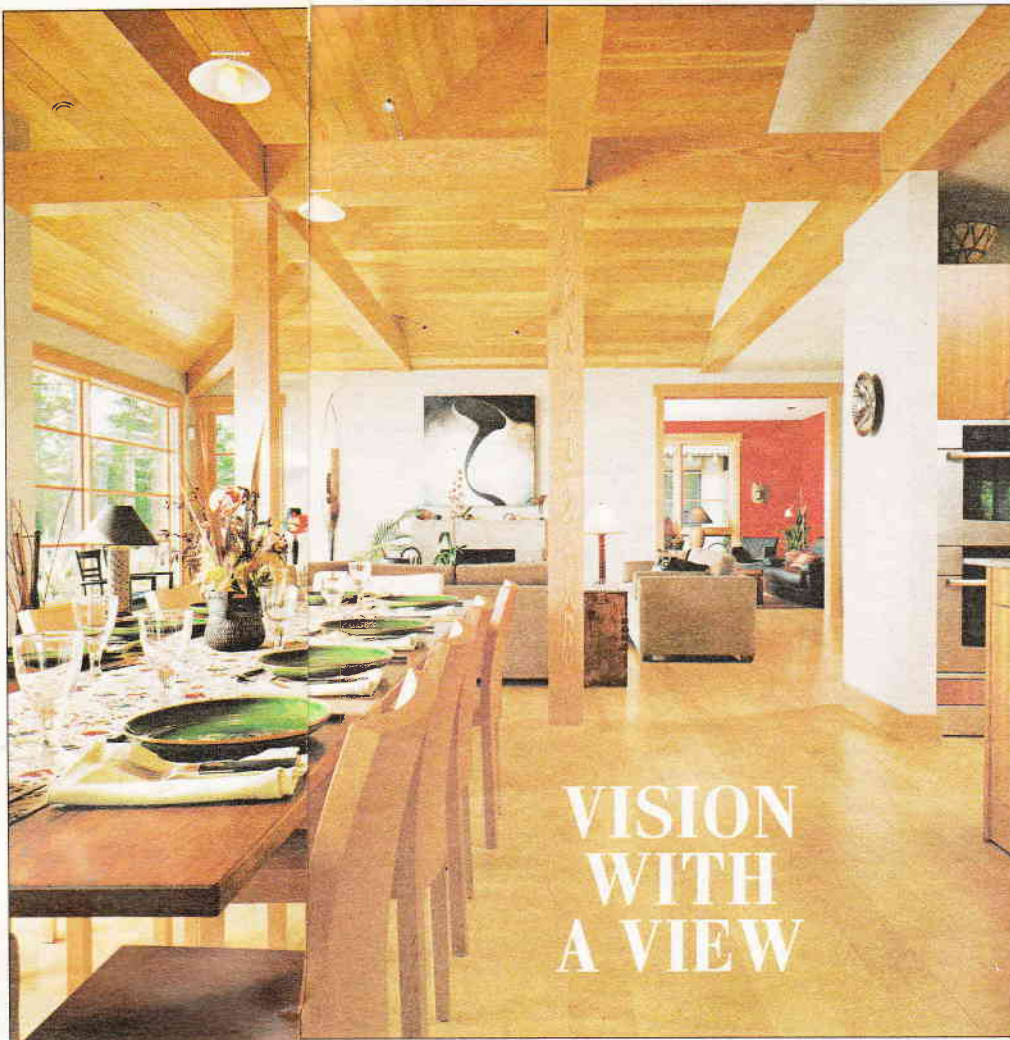
es

ears for
ur yard-

Tall Trees,
edges that
auty and
desire.

IC
ursery
ce NE

70-8883
ry.com



VISION
WITH
A VIEW

Continued from
page 54

Soli, Bellevue interior designer Pamela Pearce, local artisans, artists, landscape designers and Whidbey contractors Dennis Kamera and Greg Gilles to help them design, build and furnish their light- and art-filled home.

The Bodines were hands-on clients, buying modern furniture and lighting from around the country and Italy, studying Japanese-design books and plotting the garden. "Norm and Danielle were adamant about simplicity," says architect Soli. "With them it was always less." The result is a simple aesthetic, defined by Japanese post-and-beam construction and expanses of glass. "It's definitely a very personal expression of their wide range of tastes," says Pearce of the European
Continued on page 58 >

Japanese post-and-beam construction unifies the long, horizontal house. To the right of the dining room is the kitchen; just beyond is the living room. The red-walled study can be closed off from the rest of the main floor with pocket doors.

It takes a team

NORM AND DANIELLE BODINE'S home reflects their tastes while showcasing the variety of talents they assembled to help them get the job done. Here are some clues as to how such harmonious creativity was achieved:

ARCHITECT TODD SOLI: "Norm was inspired by the book "The Japanese House: Architecture and Interiors" by Murata and Black, and we all referred back to it."

INTERIOR DESIGNER PAMELA PEARCE: "My main contribution is probably the calm feeling that the house has through subtle material relationships, stain and paint colors, and the integration of architectural materials."

DANIELLE BODINE: "Pam chose all the neutral wall colors for the art; we'd always had white before."

LOCAL EXPERTS: Whidbey Island artisans who worked on the house include furniture builder Dennis Bohling, cabinet-maker Mike Flanagan, blacksmith Jeff Holtby and wood artist Bruce Schwager.

VISION WITH A VIEW

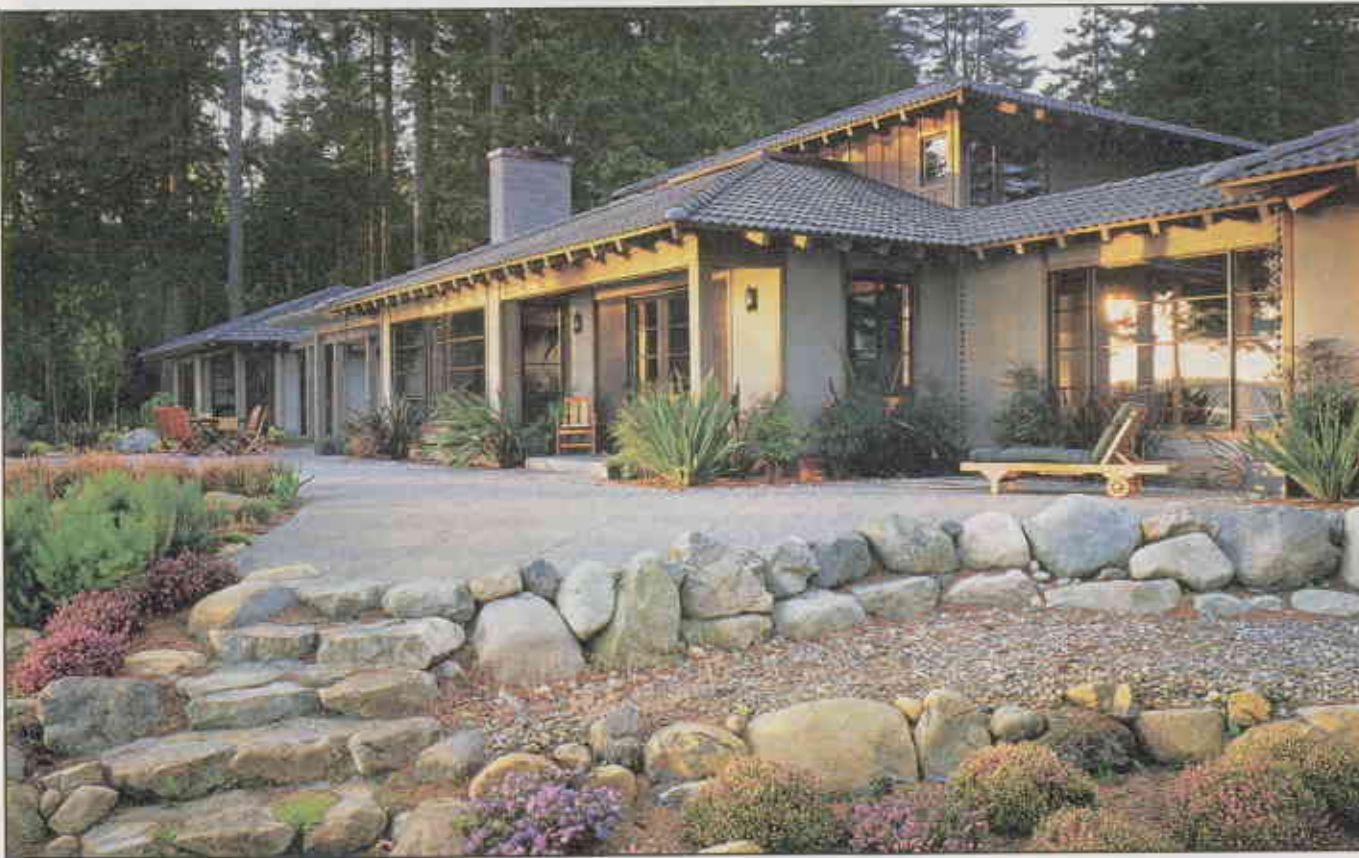
Continued from page 56

furniture mixed with Japanese antiques, sleek German kitchen, Chinese granite entry and hand-carved front door.

When the Bodines bought the property three years ago, it had a pond, remnants of a garden, and an old house, which they cleared away by donating it to the volunteer fire department for practice burns. The garden was overgrown with rhododendrons, but Norm, who took up gardening in Detroit as stress relief from work, was enthused about the wild setting and year-round outdoor climate. He took a pruning class from Portland Japanese-garden expert Masayuki Mizuno, and promptly hired Mizuno to come help with the new garden.

Before the house was built, they excavated a watercourse and huge pond, edging with boulders contributed from a neighboring property. Landscape designer Dianne Iverson planned the terraces with magnificent water views, rockeries and stone steps, and Norm started planting. Mondo grass, flowering cherries and apricots, pines and bamboo all set the serene tone for the

Continued on page 60 >



The Bodine home, high on a Whidbey Island bluff, faces west to shipping lanes, sunsets and the Olympic Mountains. The water side of the house features expanses of glass and terraces to open the house to the light and view.

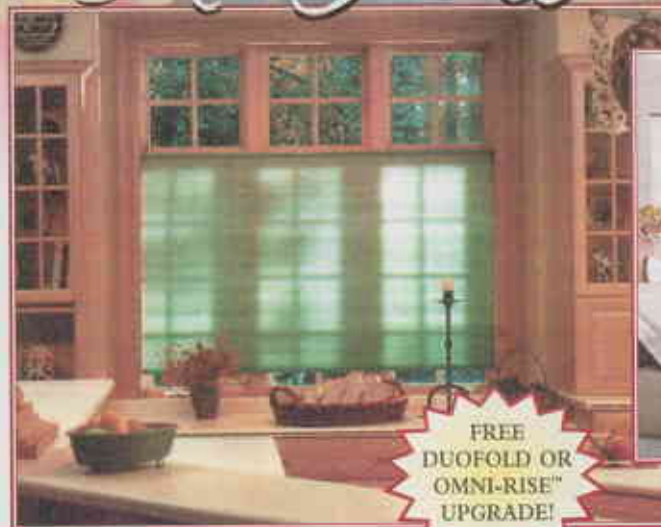
Super Savings for Fall

PURCHASE BEAUTIFUL
SYMPHONY® DOUBLE HONEYCOMB
CELLULAR SHADES AT
UP TO 75% IN SAVINGS.

ALSO ENJOY A FREE UPGRADE FOR
DUOFOLD TOP DOWN-BOTTOM UP OR THE
OMNI-RISE™ CONTINUOUS CORD
LOOP SYSTEM! OR CHOOSE SHANGRI-LA®
SHEER HORIZONTAL WINDOW SHADINGS AT
UP TO 55% IN SAVINGS

WHILE YOU ENJOY A FREE UPGRADE
FROM A 2" VANE TO A 3" VANE!
HURRY, THESE SAVINGS WON'T LAST LONG!

Hurry in and enter to win a trip to
Paradise! 4 days/3 nights
at the Atlantis Resort,
Paradise Island, Bahamas!
See store for details.



AMERICAN DRAPERY
BLIND
& CARPET
"Home of creative window fashions"

Free
**IN HOME
DECORATING**
877-777-8577
www.freeinhome.com

Seattle
1555 NW Market

Eastside
7990 Leary Way, Redmond

South King
700 S. 3rd St. Renton

Pierce &
Kitsap Counties

S. Snohomish & Everett
20101 44th Ave. W., Lynnwood

N. Snohomish
& Skagit Counties

Whatcom County
1429 N. State St., Bellingham

Spokane
3811 E. Sprague

Hurry, offer will end 11/30/05. These discounts are for the stated products only. Discounts do not apply to installation or trip fees. Discounts MAY NOT be combined with any other offer or coupon. Discounts are off manufacturer's suggested retail price. MSRP may not have resulted in actual sale.



ern dual-fuel design classic Aga styling!

and looks and exceptional cooking performance make
professional cooking range to aspire to.
Better Homes and Gardens as one of the best kitchen
The Aga 6-4 series offers four electric ovens: a conventional
programmable convection oven, a simmering oven and
state-of-the-art ceramic broiler.

powerful gas burners, including
flame wok burner, the Aga
5 stunning colors.

owners will testify, once you've owned an Aga it's hard
without one. To experience the amazing Aga first hand,
visit Home & Hearth, where we've been selling Aga
since 1986.

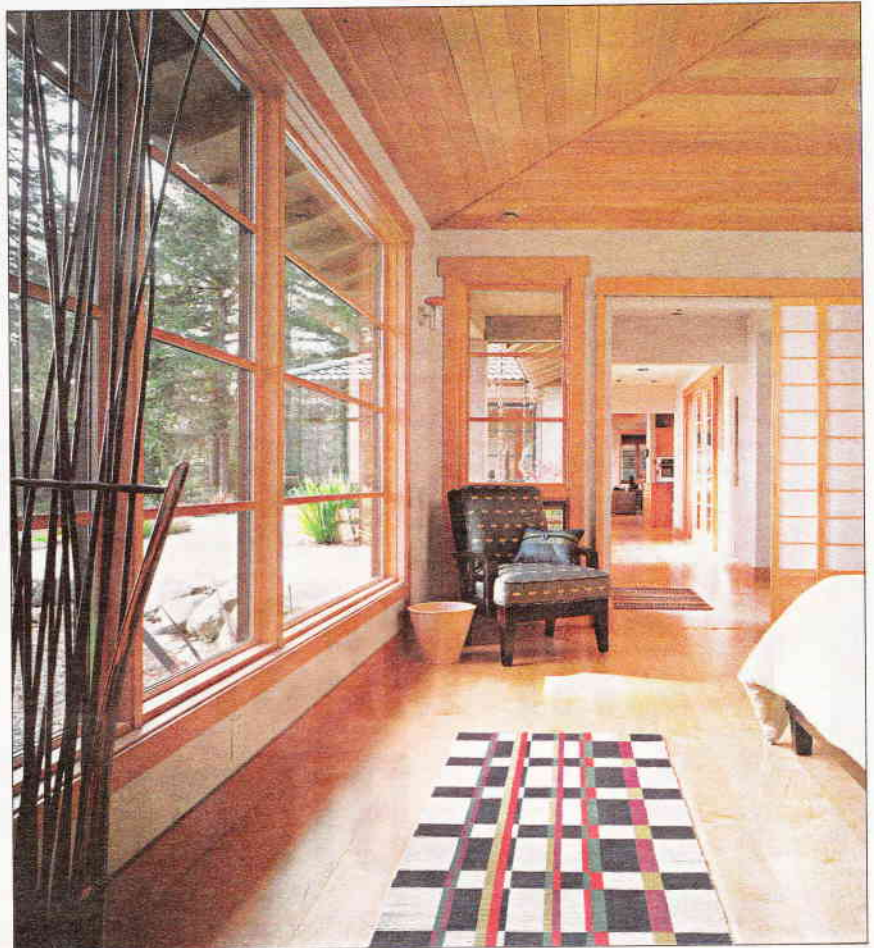


THE Fireplace & Stove Store!

Seattle 5333 Ballard Ave. NW, Ballard
(206) 783-9115 - Toll Free (888) 783-9115

Woodinville 14475 Woodinville-Redmond Rd., Woodinville
(425) 486-9286 - Toll Free (877) 486-9286

hearth.com Open M-F 9:30am-6pm; Sat. 9:30am-4pm



The home's calm,
cool aesthetic con-
tinues down the
hall into the mas-
ter suite, where
shoji screens can
be slid shut for
privacy.

VISION WITH A VIEW

Continued from page 58

house, which was designed to harmonize with the garden as well as the quintessential Northwest site.

"It's a wildly exposed site," says Soli, where the weather blows in from the southwest. His challenge lay in providing all the light the Bodines wanted while still making a sturdy house. At the same time, big, old evergreens dictated where the house could be. His task was made easier by the property's total privacy and a wide-open shot at world-class scenery. The shape of the finished structure, stretched along the high bluff like a relaxed cat, gives every main room a vast view of the water.

Soli credits the project's success to decisive clients who knew what they wanted and stayed true to it throughout construction. While exquisitely finished, the house never overpowers the magnificent site, nor its furnishings and art collection. "I had a vision of this thing," says Norm of his Japanese garden, a remark that applies equally to all that has been created. P

Valerie Easton is a Seattle freelance writer and contributing editor for Horticulture magazine. Her e-mail address is valeaston@comcast.net. Benjamin Benschneider is a Pacific Northwest magazine staff photographer.